

FOR LEASE

3,259 Total SF
\$19.50/SF Gross

Available June 2017



14950 Heathrow Forest Parkway, Suite 100
Houston, TX 77032 Phone: 281-442-5404

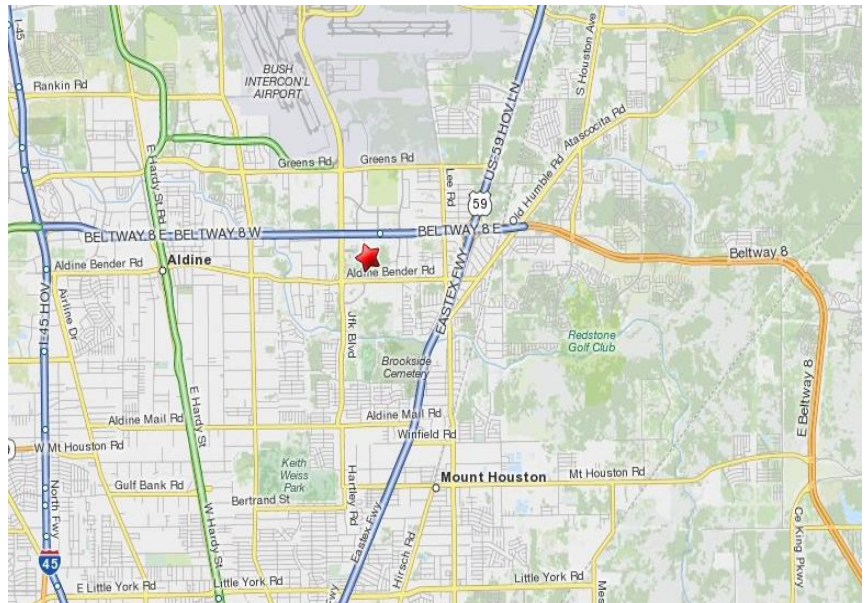


THE MEADOWS AT INTERWOOD

14950 Heathrow Forest Pkwy, Suite 175. Houston, Texas 77032

AMENITIES

- Class A suburban office building featuring cantilevered office areas overlooking a dramatic four-story atrium lobby
- Near the intersection of Beltway 8, JFK Blvd, and US 59, just south of Bush Intercontinental Airport (IAH), and only a few miles away from the new ExxonMobil campus
- Located in the exclusive Interwood Corporate Park, a "Woodlands"-like densely forested 415-acre oasis including a 1-1/4 mile jogging trail
- Building features available to tenants:
 - Secured garage parking
 - Private night-time patrol guard
 - Conference room
 - Gym facility with state-of-the-art locker rooms
 - On-site deli restaurant



© 2017 Brummett and Company. The information above is believed reliable. While its accuracy is not doubted, no guarantee, warranty or representation about it is hereby stated or implied. It is the responsibility of any interested party to independently confirm its accuracy and completeness. Rates quoted are "as-is" initial base rents only. Interested parties should conduct a careful, independent investigation of the properties to determine suitability.

FOR LEASE

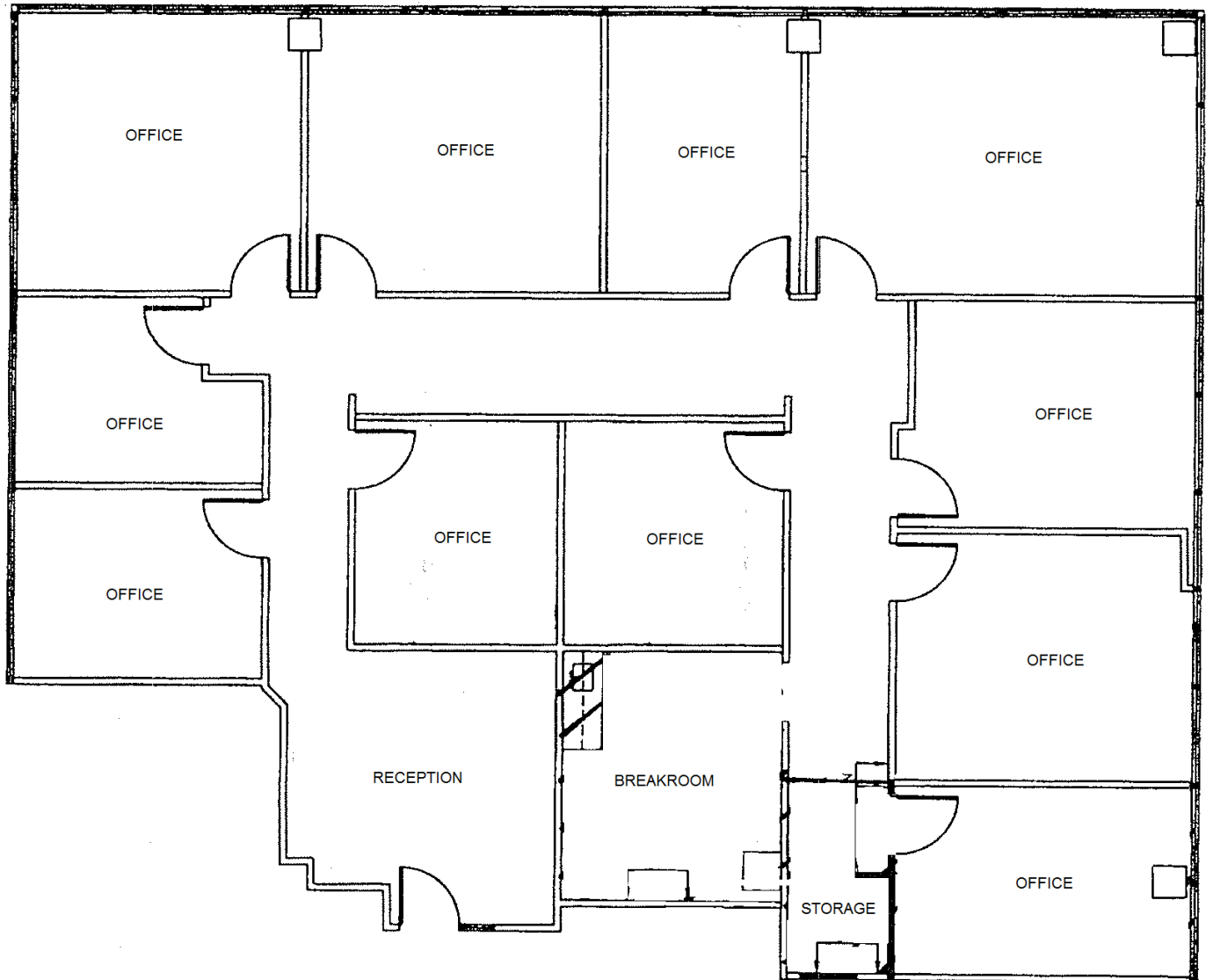
3,259 Total SF

\$19.50/SF Gross

Available June 2017



14950 Heathrow Forest Parkway, Suite 100
Houston, TX 77032 Phone: 281-442-5404



THE MEADOWS AT INTERWOOD

14950 Heathrow Forest Pkwy, Suite 175. Houston, Texas 77032

© 2017 Brummett and Company. The information above is believed reliable. While its accuracy is not doubted, no guarantee, warranty or representation about it is hereby stated or implied. It is the responsibility of any interested party to independently confirm its accuracy and completeness. Rates quoted are "as-is" initial base rents only. Interested parties should conduct a careful, independent investigation of the properties to determine suitability.